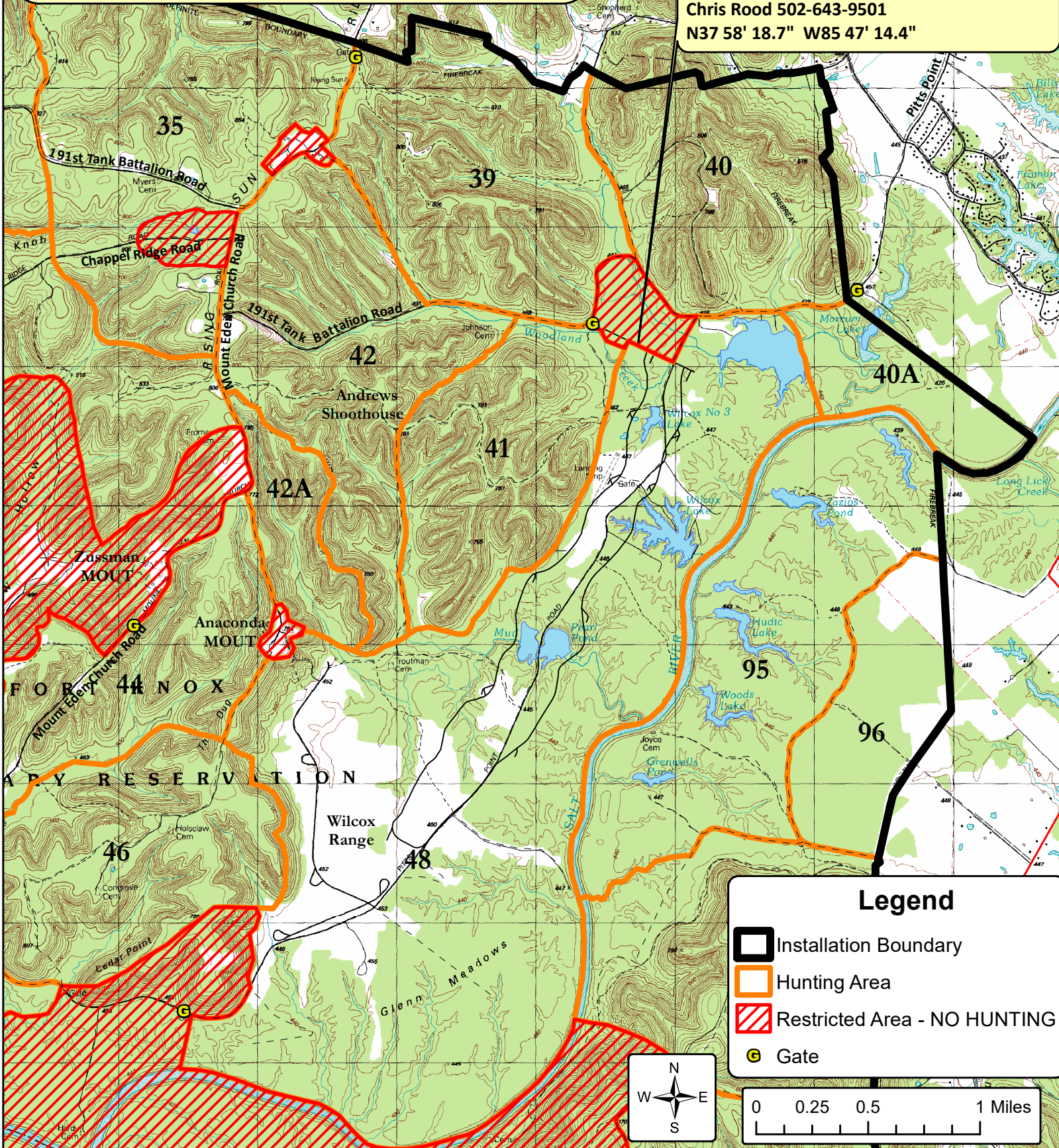


The gate to HA48 will be open in the mornings by 5:30 am.

Hunters in this Hunting Area must physically check in and out with the Area Guide each day by 6:30 pm to verify they are out of the area so the gate can be secured!

Do not check out of iSportsman until you have checked out with your Area Guide!

Area Guide Location for HAs 39, 40+A, and 48  
Chris Rod 502-643-9501  
N37 58' 18.7" W85 47' 14.4"



**Legend**

- Installation Boundary
- Hunting Area
- Restricted Area - NO HUNTING
- Gate

